

2006 InterClub National Championship

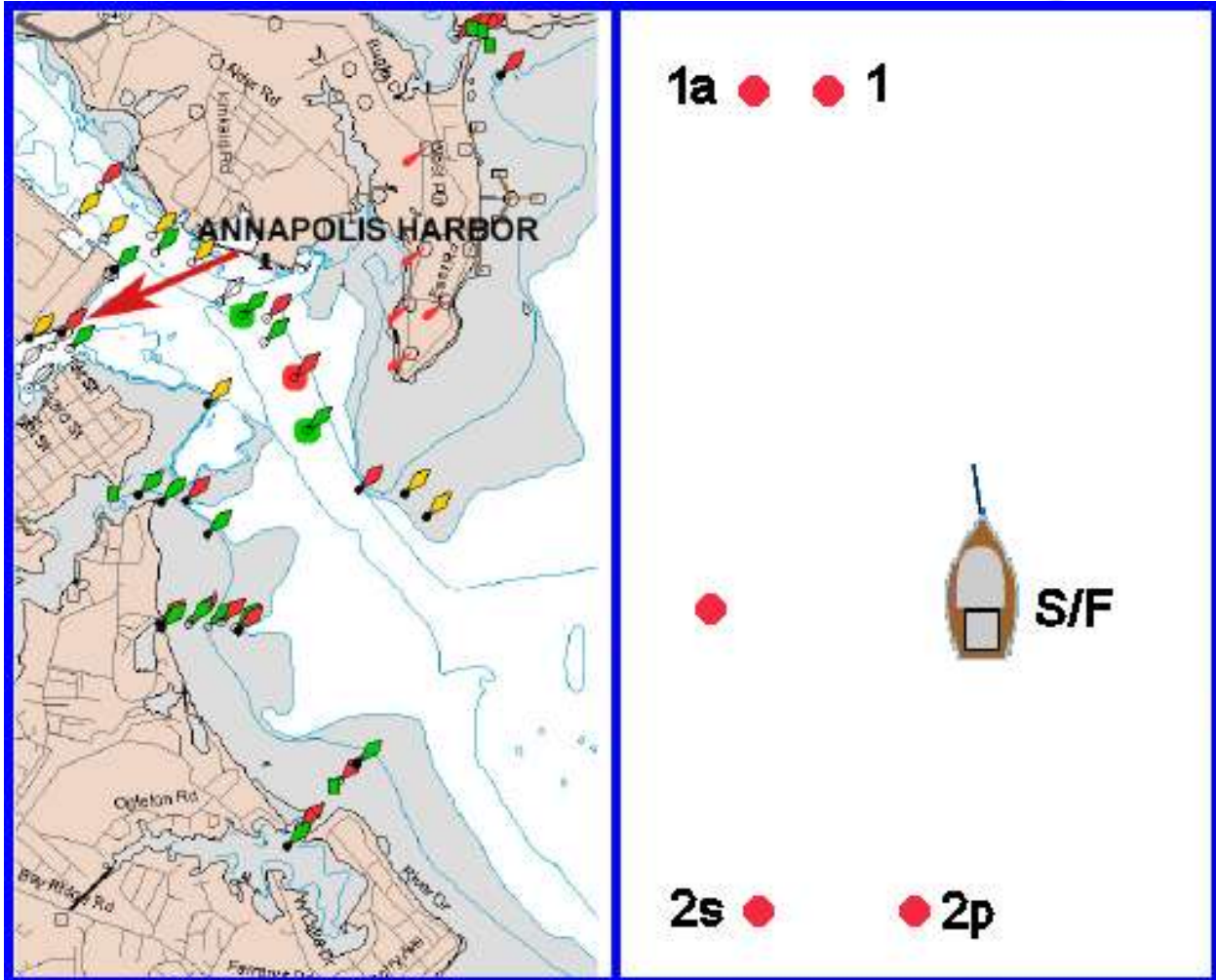
Sailing Instructions

25 & 26 March 2006

Hosted By the Annapolis InterClub Fleet and Severn Sailing Association

Sponsored By:

Attachment A:



DRAFT

1. RULES

1.1 The Regatta will be governed by the rules as defined in the Racing Rules of Sailing (RRS).

1.2 The InterClub Technical Regulations are amended such that all boats are required to carry a bow line of at least 12 feet in length and 3/16" diameter.

1.3 At the discretion of the Race Committee and depending upon the number of entries, the fleet may be divided into divisions, which will sail in round-robin.

1.4 Bow numbers are required for each boat. Bow numbers shall match the sail number. If two boats register with the same "bow/sail" numbers, the boat whose actual hull number matches the "bow/sail" number shall display that number, the other must display a bow/sail number not used by any other boat in the regatta. The bow number shall be placed within 1 foot of the bow stem, be at least 10 inches in height and be of contrasting color to the hull. Bow numbers will not be supplied by the organizing authority.

1.5 Appendix P of the RRS (Immediate Penalties for Breaking RRS 42) may be used. In the event that Appendix P is to be in effect a notice will be posted, no later than the departure of the RC Signal Boat.

1.6 Life Jackets - All competitors shall wear personal buoyancy at all times while on the water except for brief periods of time when clothing is being added or removed from under the personal buoyancy.

2. CONDITIONS OF ENTRY

Only InterClub Dinghies measured in accordance with the IC Technical regulations for the InterClub Dinghy Class may enter. All boats must have completed registration and competitors must pay all associated fees with the regatta organizing authority before becoming official entries.

3. NOTICES AND CHANGES TO THE SAILING INSTRUCTIONS

3.1 All written notices including any changes to these sailing instructions shall be posted on the official notice board beneath the deck of the SSA Clubhouse.

3.2 Any changes in the sailing instructions will be posted 10 minutes before the departure and 10 minutes after the arrival of the signal boat each day or, on the water communicated to each boat before her warning signal. .

4. SIGNALS MADE ASHORE

4.1 Except for the schedule of races, changes to the sailing instructions will be posted within 15 minutes after the end of the competitor's meeting on Saturday 25 March. Changes made after Saturday's racing will be posted by 8:30a on Sunday 26 March. Changes to the schedule of races will be posted by 8:00pm on the day before they will take effect.

4.2 When the AP flag is displayed ashore "1 minute" is replaced with "not less than 30

minutes" in race signal AP

5. SCHEDULE

5.1

Saturday 25 March

9:30a Skippers' meeting

11:00a Warning signal for the first race

5.2

Sunday 26 March

10:00a Warning signal for the first race

6. PARTICIPATION

The Race Committee may score a skipper RET and require that he/she cease participation and request a skipper return to the dock, if in the Race Committee judgment a skipper demonstrates a lack of experience and skill consistent with the current weather conditions.

7. LAUNCHING

No boat shall launch and go sailing until permission is given by the Race Committee via an announcement on the Club Public Address System.

8. RACING AREA

The racing area will be in the area off the SSA waterfront in the Severn River or in Spa Creek.

9. COURSES AND MARKS

9.1 All marks shall be either orange or yellow cylinders or balls.

9.2 The course shall be a Windward / Leeward course as shown in the attachment A.

9.3 Start-1-1a-2s or 2P-Finish. The starting line and the finishing line will be the same, located approximately 1/3 of the total distance between the windward mark and the leeward marks (the gate). There will be offset mark at the windward mark and a leeward gate at the leeward end of the course.

9.5 The windward mark will be in place at the start, the gate will be in place before the first boat first rounds the weather mark and the finish will be in place before the first boat rounds the last leeward gate.

9.6 The RC may designate that the course be sailed twice around by displaying flag "T" displayed at or before the Warning Signal. In which case the course to be sailed shall be: Start-1-1a-2S or 2P-1-1a-2S or 2P-Finish.

10. CHANGE OF COURSE AFTER THE START

The course shall not be changed after the start, except in accordance with sailing instruction 9.5

11. SHORTENED COURSE

The course shall not be shortened.

12. THE START

12.1 The starting line shall be between a staff with an orange flag on the Race Committee boat and the course side of a mark. The mark may be replaced by a staff with an orange flag in a boat.

12.2 No boat shall start later than three (3) minutes after their starting signal.

13. STARTING SIGNALS

Appendix Q – Sound-Signal

The warning signal for subsequent races will be made very shortly after the finish of the previous race.

14. INDIVIDUAL RECALLS

Individual recalls will be signaled in accordance with RRS 29.1. The Race Committee intends to hail the bow or sail numbers of the boats starting prematurely. Failure to make a hail, the timeliness of such hails, the order in which boats are hailed or of a boat to hear a hail shall not be grounds for redress. This changes RRS 62.1(a).

15. GENERAL RECALLS

General recalls will be signaled by multiple horn or whistle blasts only. The next signal made shortly thereafter shall be the warning signal. This changes RRS 29.2.

16. I-FLAG RULE

The I-flag may be invoked verbally by the Race Committee prior to the warning signal. No flag or visual signal will be used. This changes RRS 30.1.

17. Z- FLAG RULE

The Z-flag may be invoked verbally by the Race Committee prior to the warning signal. No flag or visual signal will be used. This changes RRS 30.2.

18. THE FINISH

The finish line will be between a staff with an orange flag on the Race Committee boat and the course side of a mark. The mark may be replaced by a staff with an orange flag in a boat.

19. TIME LIMIT

If no boat finishes within 60 minutes, that race shall be abandoned. Any boat not finishing within 15 minutes of the first boat to finish shall be scored DNF. This changes RRS 63.1 and Appendix A5

20. WITHDRAWING FROM A RACE

Any boat withdrawing from a race, or leaving the racing area shall inform the Race Committee of her action as soon as possible.

21. POSTPONEMENT, ABANDONMENT AND CANCELLATION

The Race Committee may postpone or abandon any race for reasons of safety or fairness and instruct any or all boats to return immediately to the Club dock and remain there until racing is resumed, canceled or until boats choose to retire for the day. All such announcements shall be made verbally by the Race Committee.

22. CAPSIZES

Each boat's obligation under fundamental rule 1.1 "Helping those in danger" specifically includes the following: whenever possible boats in the neighborhood of an overturned boat should go to the rescue of her crew. Boats going to the rescue must report their action to the Race Committee and may file for redress in accordance with RRS 62.1(c). . The jury will have the following priorities in awarding redress: place in race, average of day's scores, average of series. The skipper and crew of the capsized yacht may be taken ashore immediately at the discretion of the Race Committee.

23. PENALTY SYSTEM

23.1 A boat that has taken a penalty or retired under rule 31.2 or 44.1 shall inform the Race Committee upon finishing.

23.2 Appendix N (Immediate Penalties for Breaking Rule 42) will apply as changed by instruction 23.4

23.4 Delete N2.2 and N2.3 (Penalties - Second & Third Protest).

24. PROTESTS

24.1 A protesting boat shall inform the Race Committee at the finish of his/her intent to protest and identify the boat being protested directly after the finish of the race in which the incident took place.

24.2 Protests forms are available on the shelves on the east side of the SSA clubhouse and shall be filed with a representative of the RC at that location within the protest time.

Protest Time will begin at the time of the docking of the Race Committee signal boat and end one hour later. Docking time will be posted on the Official Notice Board.

24.3 Protest notices will be posted within one-half hour of the Protest Time limit to inform competitors where and when there is a hearing in which they are interested parties or witnesses.

25. SCORING

25.1 The Low Point Scoring System, RRS Appendix A2 will be used. A2 is changed such that a DNF will be scored as number of finishers +1.

25.2 A boats score shall be the sum of all of her race scores (no discard).

25.3 Two races constitute a series.

26. REPLACEMENT OF CREW OR EQUIPMENT

26.1 Substitution of competitors will not be allowed without prior written approval of the race committee.

26.2 Substitution of damaged or lost equipment will not be allowed unless approved by the race committee. Requests shall be made at the first reasonable opportunity

27. INSPECTIONS

Inspections may be made during or after the regatta for compliance with Class Rules.

28. PRIZES

Prizes will be awarded to the top 5 skippers and crews.